

# Homework/Extension

## Measure Mass

### National Curriculum Objectives:

Mathematics Year 1: (1M1) Compare, describe and solve practical problems for: lengths and heights [for example, long/short, longer/shorter, tall/short, double/half] mass/weight [for example, heavy/light, heavier than, lighter than] capacity and volume [for example, full/empty, more than, less than, half, half full, quarter] Time [for example, quicker, slower, earlier, later]

Mathematics Year 1: (1M2) Measure and begin to record: lengths and heights mass/weight capacity and volume time (hours, minutes, seconds)

### Differentiation:

Questions 1, 4 and 7 (Varied Fluency)

**Developing** Identify the weight objects on seesaw scales using cubes.

**Expected** Identify the weight of objects on balance scales using a range of non-standard units.

**Greater Depth** Identify the weight of objects on balance scales using a range of non-standard units. Includes calculating the mass.

Questions 2, 5 and 8 (Varied Fluency)

**Developing** Identify the correct sentence. Includes comparative sentences about the weight of objects. Objects shown on seesaw scales.

**Expected** Identify the correct sentence. Includes comparative sentences about the weight of objects. Objects shown on balance scales.

**Greater Depth** Identify the correct sentences. Includes comparative sentences about the weight of objects. Includes calculating the mass.

Questions 3, 6 and 9 (Reasoning and Problem Solving)

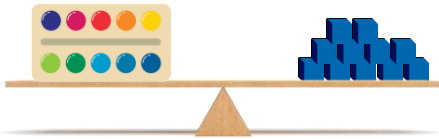
**Developing** Identify two objects to balance the seesaw scales. Only one possible answer.

**Expected** Identify two objects to balance the scales. Two possible answers.

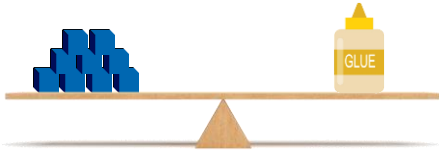
**Greater Depth** Identify two objects to balance the scales. Includes calculating the mass of an object. Two possible answers.

# Measure Mass

1. Complete the sentences to match the scales.



The paint palette weighs  cubes.



The glue weighs  cubes.

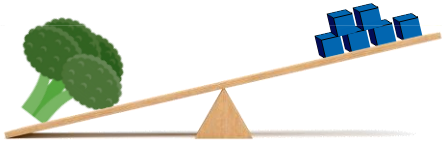


The pencil sharpener weighs  cubes.

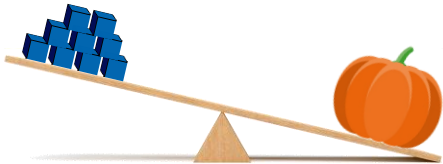


VF  
HW/Ext

2. Tick the correct sentence.



1. The broccoli weighs 8 cubes.



2. The pumpkin is lighter than 5 cubes.



3. The sweetcorn weighs 4 cubes.



VF  
HW/Ext

3. Which two items would balance the scales?



3 cubes	4 cubes	5 cubes	6 cubes	7 cubes



RPS  
HW/Ext

# Measure Mass

4. Complete the sentences to match the scales.



The train weighs  blocks.



The duck weighs  acorns.

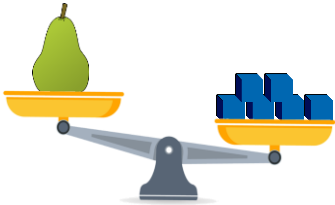


The ball weighs  cubes.

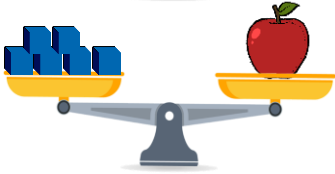


VF  
HW/Ext

5. Tick the correct sentence.



1. The apple weighs 7 cubes.



2. The carrot is lighter than 4 cubes.



3. The pear weighs less than 6 cubes.



VF  
HW/Ext

6. Which two items would balance the scales?



3 cubes	4 cubes	5 cubes	6 cubes	7 cubes

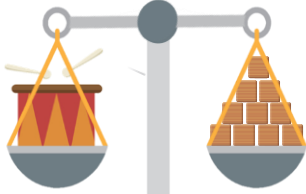
Find two possibilities.



RPS  
HW/Ext

# Measure Mass

7. Complete the sentences to match the scales.



The drum weighs  blocks.



The jigsaw weighs  jewels.



One dinosaur weighs  cubes.

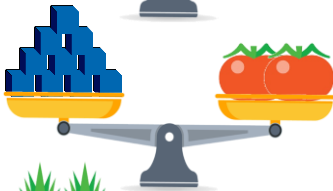


VF  
HW/Ext

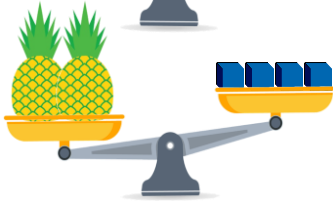
8. Tick the correct sentences.



1. The lemon is heavier than 6 cubes.



2. One tomato weighs 5 cubes.



3. Two pineapples are lighter than 4 cubes.

4. The lemon is lighter than a tomato.



VF  
HW/Ext

9. Which two items would balance the scales?



2 cubes	4 cubes	5 cubes	6 cubes	7 cubes

Find two possibilities.



RPS  
HW/Ext

# Homework/Extension

## Measure Mass

### Developing

1. The paint palette is 11 cubes.  
The glue weighs 9 cubes.  
The pencil sharpener weighs 4 cubes.
2. 3
3. The rocket and the football.

### Expected

4. The train weighs 8 blocks.  
The duck weighs 5 acorns.  
The ball weighs 4 cubes.
5. 3
6. The paint and the spinning top; The pinwheel and the boat.

### Greater Depth

7. The drum weighs 10 blocks.  
The jigsaw weighs 5 jewels.  
One dinosaur weighs 4 cubes.
8. 2 and 4
9. The bucket and the boat; The keyboard and the helicopter.