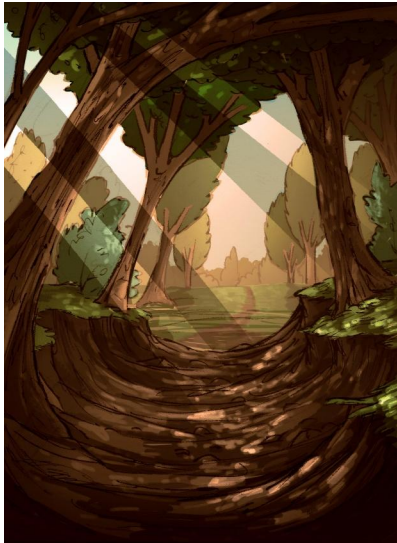


Explore a Woodland Habitat

A **habitat** is a place where animals and plants live. A good habitat has food, water and **shelter**.

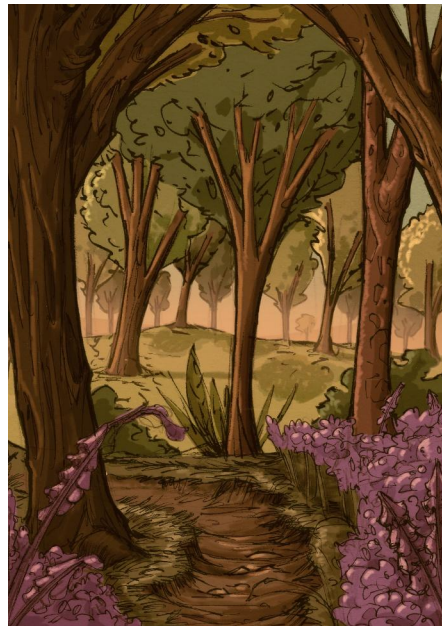


The Woodland Habitat

A woodland is a habitat where lots of trees grow together. The leaves and branches **overlap** and give lots of **shade**.

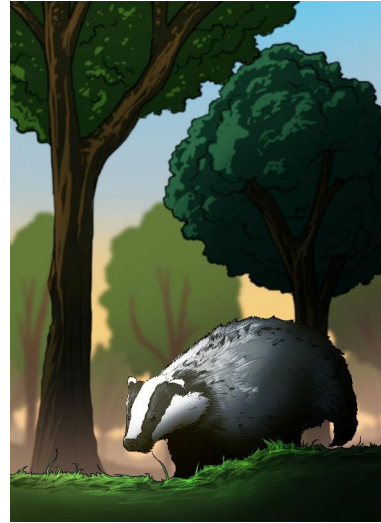
Plants and Flowers

Bluebells and brambles grow in woodlands. Trees like oak and birch also grow in these places. Leaves, fruits and nuts are the **perfect** meal for animals.



classroomsecrets.com

Explore a Woodland Habitat – Y1s/Y2e (Turquoise/Orange) – Text



Animals

Woodlands are habitats for lots of animals, birds and minibeasts because there are so many plants to eat.

Animals like hedgehogs, badgers and foxes live there and make their homes in trees, on the woodland floor or **underground**.

Minibeasts can be found living in trees or bushes. Ants, slugs and **grubs** like to live in the leaves and spiders and ladybirds like to live in bushes.

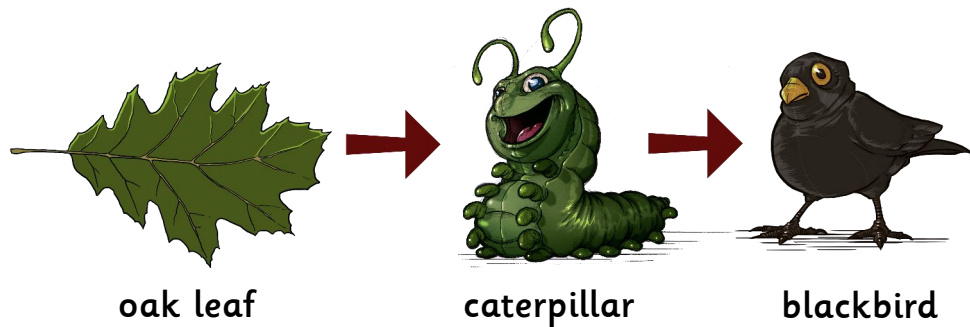


classroomsecrets.com

Explore a Woodland Habitat – Y1s/Y2e (Turquoise/Orange) – Text

Food Chains

Plants and animals living in the woodland are linked in something called a food chain. This starts with a plant like an oak tree. An insect, such as a caterpillar, will eat leaves from the tree and a small **creature** like a blackbird will eat the caterpillar. Then, a larger bird, such as a hawk, will eat the blackbird. In woodlands there are many food chains where animals and plants work together.



Have you ever visited a woodland habitat?

What does the title tell us about the text?

What is a habitat?

What do you think the word 'shelter' means?

Give the names of some plants and trees that grow in a woodland habitat.

Give the names of some animals that live in a woodland habitat.

Which minibeasts like to live in bushes?

What is a food chain?

Why are plants, flowers and trees so important in a woodland habitat?

Find and copy a question from the text.

Can you think of any other plants, minibeasts or animals that could

live in a woodland habitat?

After reading the text, what else do you want to find out about a

woodland habitat?
