

1 Match the times to the clocks.



25 minutes to 5

25 minutes past 5

25 minutes past 5

5 minutes to 5

5 minutes past 5

25 minutes to 5

2 What time does the clock show?

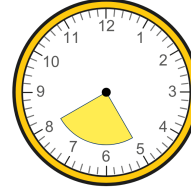


20 minutes past 2

3 Draw hands on the clock to show quarter to 8



4 How many minutes are there in a quarter of an hour?



15 minutes

5 Complete the sentence.

85 minutes = 1 hour and 25 minutes

6 Write <, > or = to compare.

60 minutes < 1 hour and 5 minutes

9 The time is 8 o'clock.

How many hours will it be until the hour hand is pointing at the 8 again?



12 hours

7 Use the cards to complete the sentence.

Midnight Noon

Noon is 12 o'clock in the middle of the day.

10 The numbers are all in the 5 times-table.

Tick the numbers that are also in the 10 times-table.

35

45

100

25

65

40

8 The time is 8 o'clock.

Draw hands on the clock to show what time it will be in 3 hours.



11 Sort the numbers into the table.

Only in the 5 times-table	In both the 5 and 10 times-tables	Only in the 10 times-table
55 75 85	40 60 70	

12 Complete the calculations.

$$\boxed{50} = 10 \times 5$$

$$\boxed{50} = 5 \times 10$$